

foundation plan
scale: 1/4" = 1'-0"

PLAN 1632

133 Cella St.

Lot 13 & 74

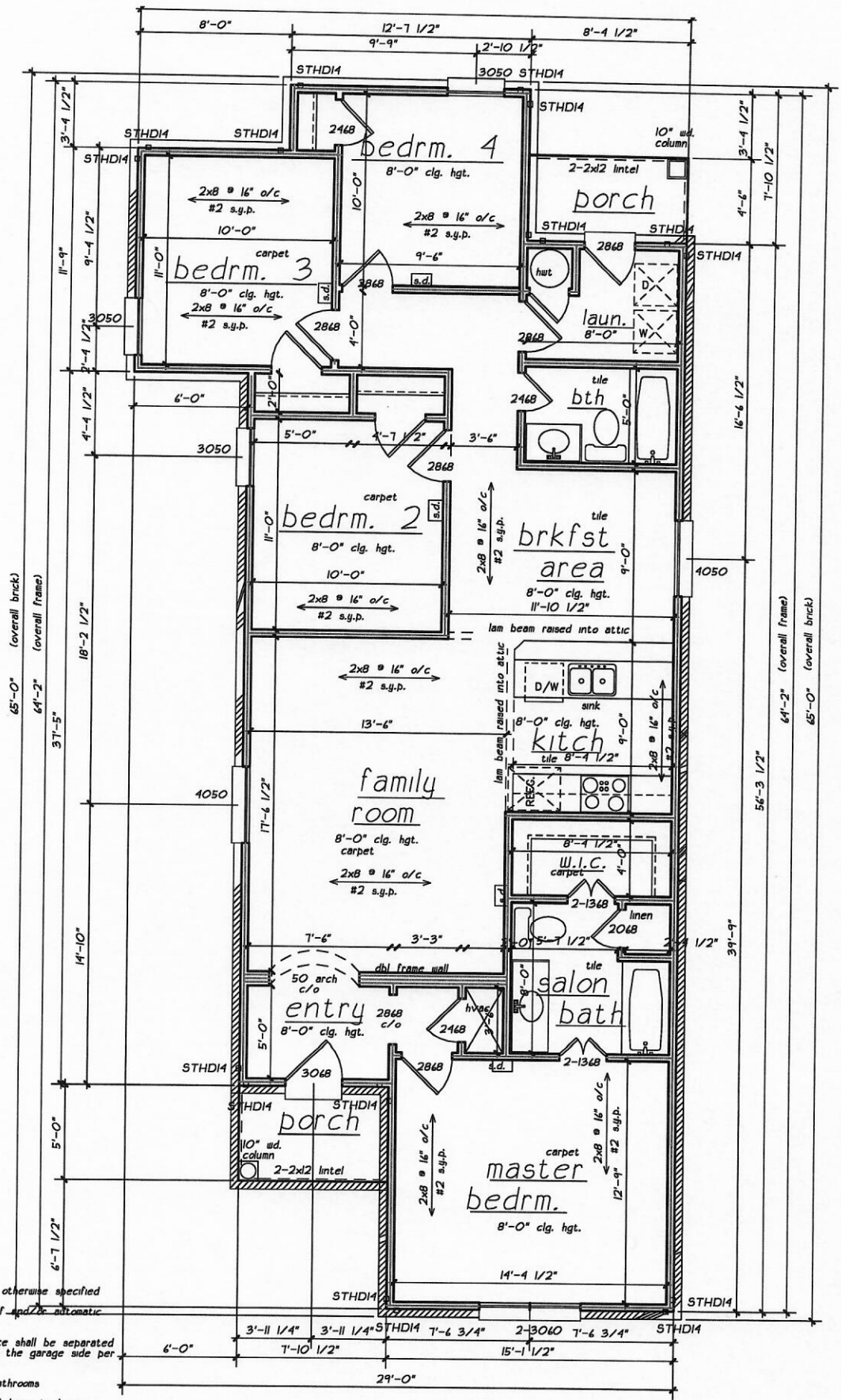
TREXLER GROUP

1164 VICKERY LANE, SUITE 101
PHONE: 507-1111 FAX: 507-1111

HTD. DN. 1385 SQ. FT.
HTD. UP xxxx SQ. FT.
TOTAL HTD. 1385 SQ. FT.
GAR. & STOR. xxx SQ. FT.
PORCHES 77 SQ. FT.

WIDTH: 29'-0"
DEPTH: 65'-0"

DATE: 10/09/12



- *All walls are 2x4's at 16" o/c unless otherwise specified
- *Garage doors will be equipped with self-closing devices.
- *Walls between the garage and residence shall be separated by a min. of 1/2" gyp board applied to the garage side per 2021 IRC R302.6
- *Provide mechanical ventilation in all bathrooms
- *All sleeping rooms and one per floor of home to have a hard wired smoke detector
- *Carbon monoxide alarms are required if the residence has garage and/or gas appliances.
- *Water heated to be installed with seismic strapping per code requirements
- * All windows in bathrooms will have tempered glass.

first floor plan
scale: 1/4" = 1'-0"

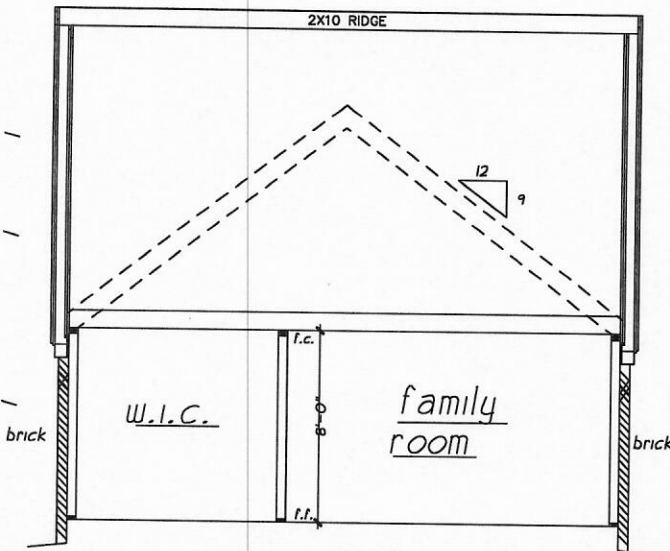
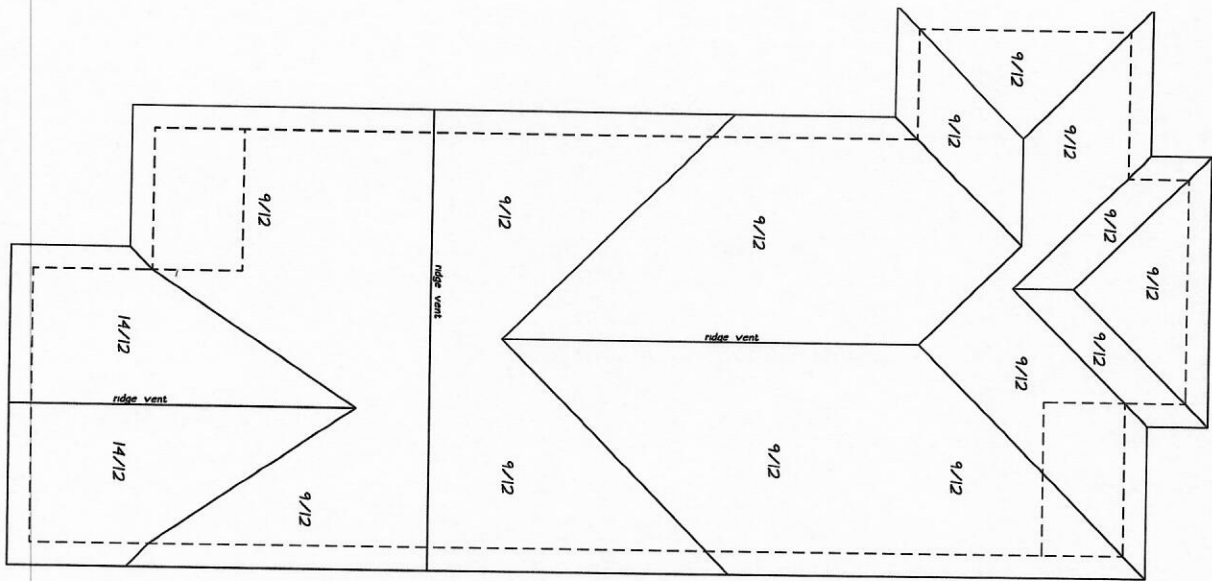
2021 IRC
Wind Category: C
Seismic Category: D

PLAN 1632
133 Cella St.
Lot 73 & 74

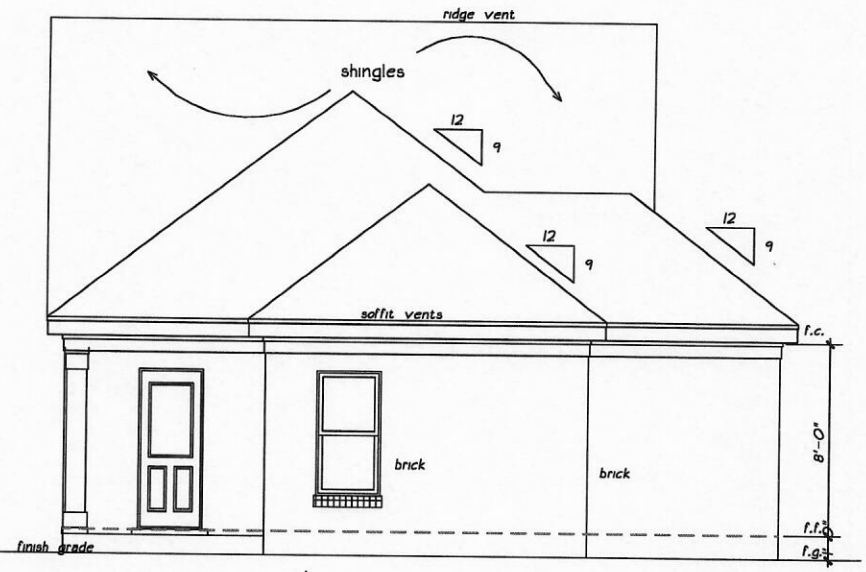
TREXLER GROUP
1164 VICKERY LANE, SUITE 101...

HTD. DN. 1385 SQ. FT.
HTD. UP xxxx SQ. FT.
TOTAL HTD. 1385 SQ. FT.
GAR. & STOR. xxx SQ. FT.
PORCHES 77 SQ. FT.

WIDTH: 29'-0"
DEPTH: 65'-0"



cross section
scale: 1/4" = 1'-0"



rear elevation
scale: 1/4" = 1'-0"



front elevation
scale: 1/4" = 1'-0"

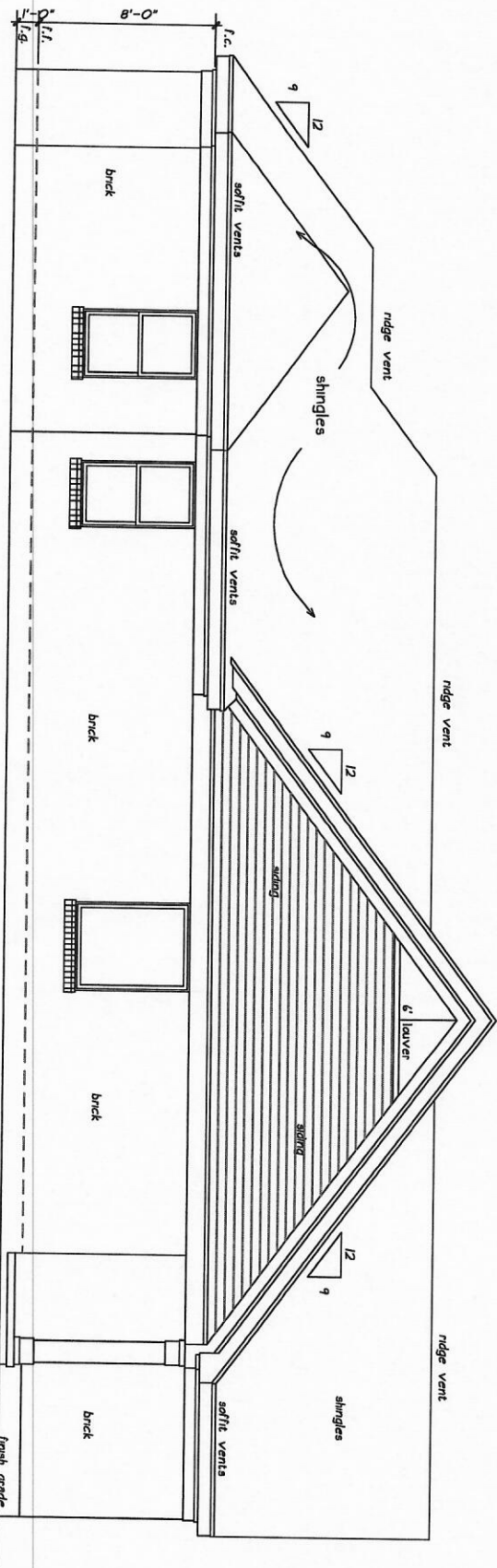
3
date: 10/09/12

PLAN 1632
133 Cella St.
Lot 13 & 14

TREXLER GROUP
1164 VICKERY LANE, SUITE 101
PHONE: 501-1411 FAX: 521-1100

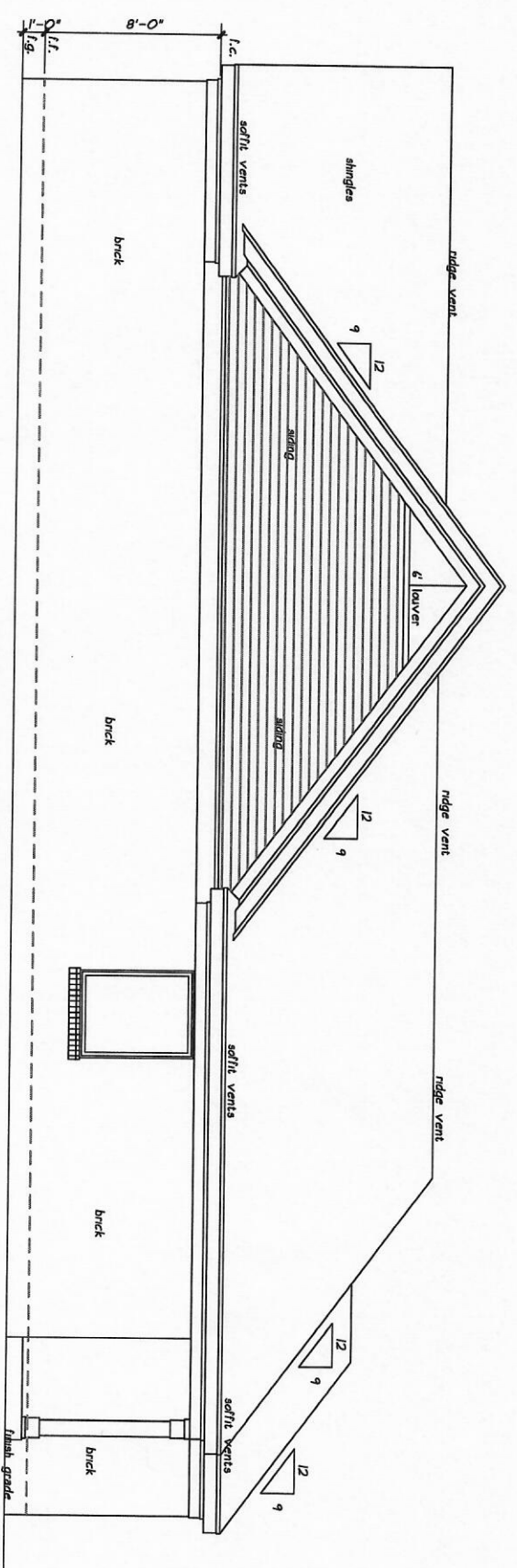
HTD. DN. 1385 SQ. FT.
HTD. UP xxxx SQ. FT.
TOTAL HTD. 1385 SQ. FT.
GAR. & STOR. xxx SQ. FT.
PORCHES 77 SQ. FT.

WIDTH: 29'-0"
DEPTH: 65'-0"



left elevation

scale: 1/4" = 1'-0"



right elevation

scale: 1/4" = 1'-0"

PLAN 1632

733 Cella St.

Lot 73 & 74

TREXLER GROUP

1164 VICKERY LANE, SUITE 101, ...
PHONE: 501-111-1111

HTD. DN. 1385 SQ. FT.
HTD. UP. xxxx SQ. FT.
TOTAL HTD. 1385 SQ. FT.
GAR. & STOR. xxx SQ. FT.
PORCHES 77 SQ. FT.

WIDTH: 29'-0"
DEPTH: 65'-0"

date: 10/09/2